



# Neosense CMS 2009

---

Configuration manual (version 6)

# Table of contents

1.	Welcome .....	2
2.	Getting started with Neosense CMS.....	3
2.1.	The opening screen .....	3
3.	Configuration menus.....	4
3.1.	'Websites' menu .....	4
3.2.	'Source code tabs' menu.....	6
4.	Managing websites .....	7
4.1.	New website .....	7
4.2.	Changing websites .....	7
4.3.	Removing websites .....	7
5.	Website properties window .....	8
6.	Notes .....	11

# 1. Welcome

Welcome to the Neosense CMS 2009 configuration manual. This manual gives you a clear overview of your Neosense CMS product's technical possibilities. We recommend you to print this manual and keep it within reach, so that you can quickly find a solution should anything be unclear. If you have problems with configuring Neosense CMS and the manual does not give a clear answer, visit our website for additional tutorials and FAQs (<http://www.digibilities.com>).

## **How to use this manual**

This manual contains useful information, whether you are familiar with Neosense CMS or not. You can use this manual in different ways. You can work through the chapters consecutively or browse through the table of contents to find topics you want to know more about.

## **Neosense CMS looks different or responds differently**

Because Neosense CMS operates on different Windows operating systems, the illustrations you see in this manual may be slightly different from the ones you see on your screen. The illustrations in this manual have all been taken from MS Windows Vista.

## 2. Getting started with Neosense CMS

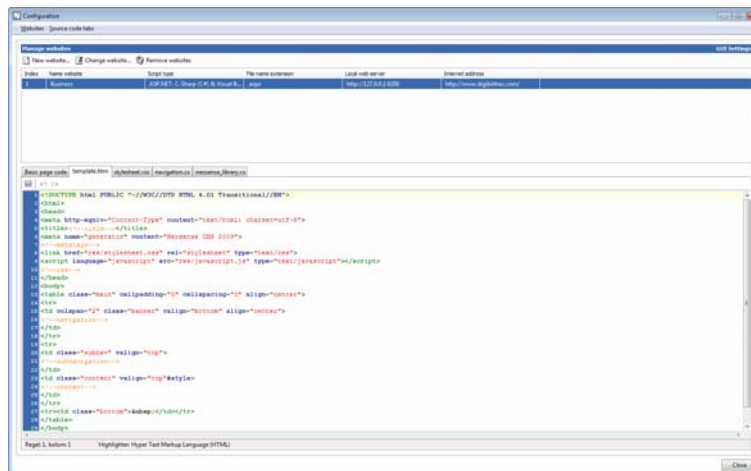
### 2.1. The opening screen

When you start Neosense CMS, you will see the following screen:



Neosense CMS offer two options, 'Business' and 'Configuration'. Clicking on the 'Business' option takes you to an environment for managing the website content. Clicking on the 'Configuration' option takes you to an environment for setting the technical preferences for the website. For more information, see the 'Neosense CMS user manual'.

After selecting the 'Configuration' environment, the following screen appears:



The menu bar with various menus is located at the top.

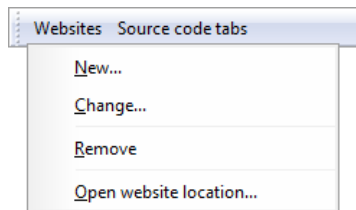
An overview of the available websites can be found under the menu bar. In the middle of the screen are several visible tabs visible where the source codes are shown. Each tab displays the content of a file. The overview of the tabs is manually adjustable.

### 3. Configuration menus

The menu bar contains the 'Websites' en 'Broncode tabs' menus.

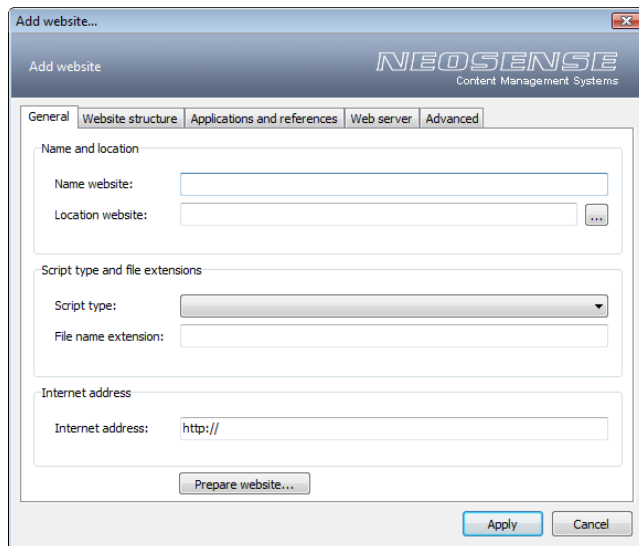
#### 3.1. 'Websites' menu

This menu contains the 'New...', 'Change...', 'Remove' and 'Open website location...' options.



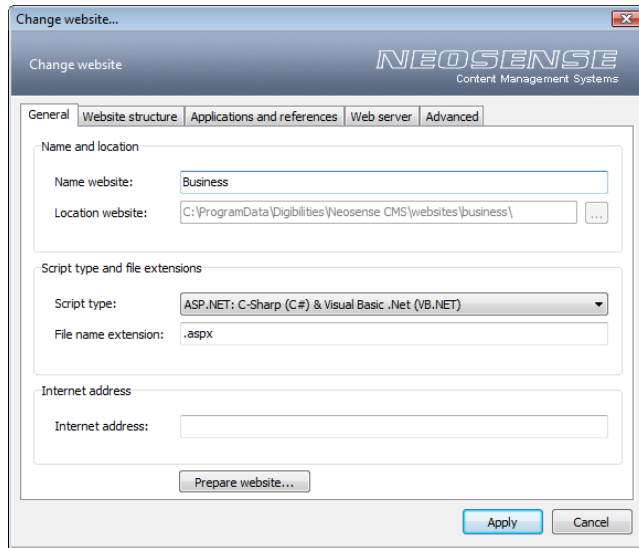
New...

Opens the window for adding a website.



Change...

Opens the window for changing the properties of an existing website.

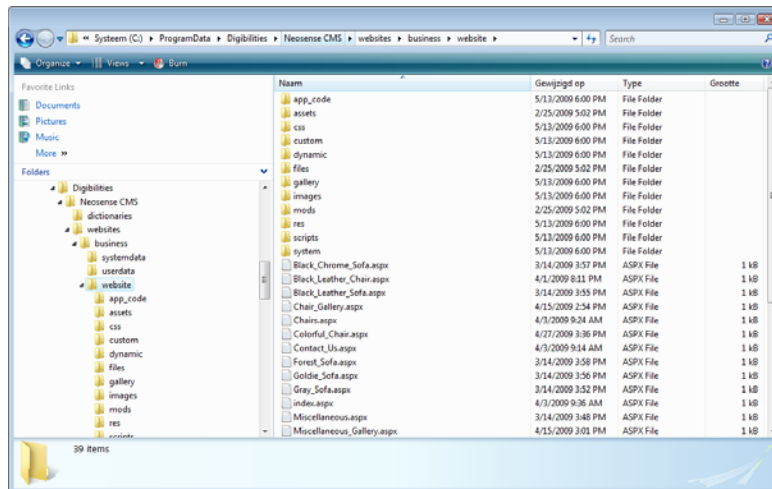


Remove

Removes an existing website.

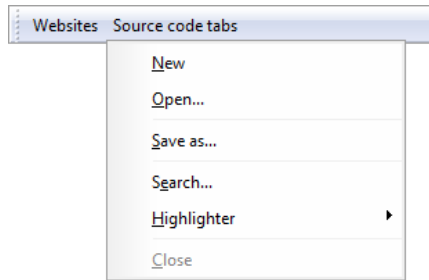
Open website location...

Opens the Windows Explorer to the folder where the website is located.



### 3.2. 'Source code tabs' menu

This menu contains the 'New', 'Open...', 'Save as...', 'Search...', 'Highlighter' and 'Close' options.



#### New

Opens a new tab for inserting source codes.

#### Open...

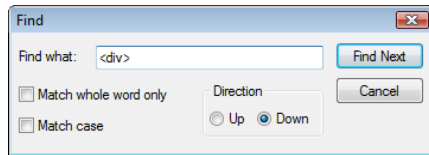
Opens a window for selecting a file.

#### Save as...

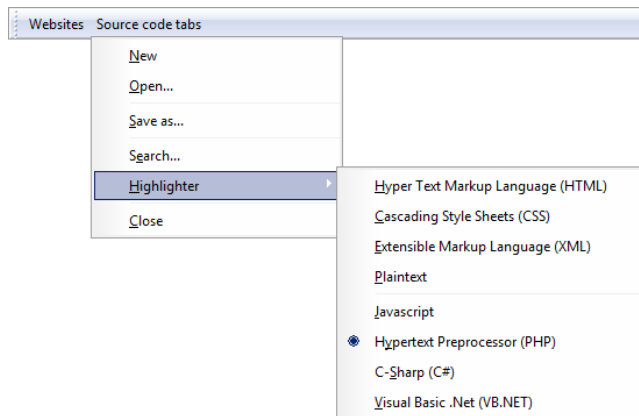
Opens a window for saving the content of a tab.

#### Search...

Opens a windows for searching the source code.



#### Highlighter



Shows different options for highlighting the code. The available highlight options depend on your product and available programming languages.

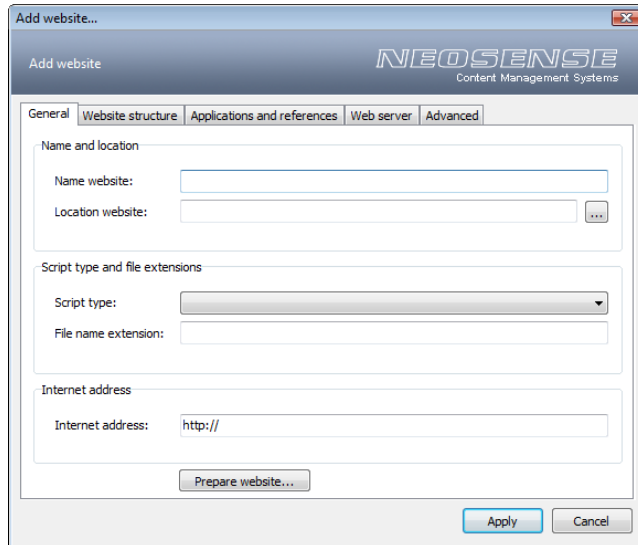
#### Close

Close a tab

## 4. Managing websites

### 4.1. New website

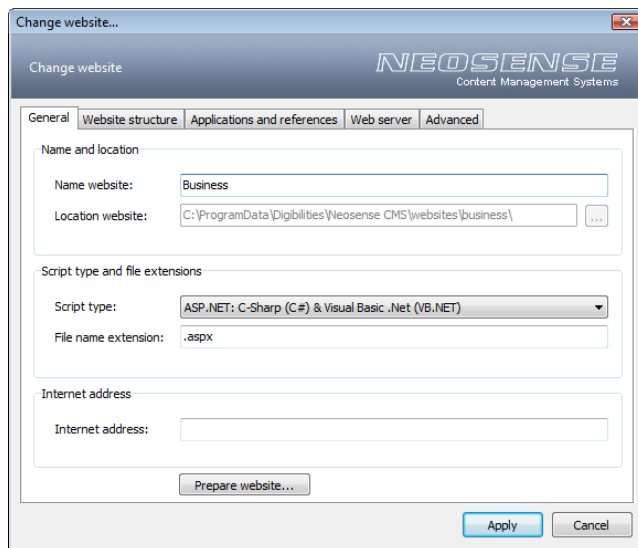
The Neosense CMS Professional edition offers the possibility for managing multiple websites. Click on 'New website...!' for adding a new website.



The screenshot shows the 'Add website...' dialog box with the 'General' tab selected. The 'Name and location' section contains empty text boxes for 'Name website:' and 'Location website:'. The 'Script type and file extensions' section has a dropdown menu for 'Script type:' and an empty text box for 'File name extension:'. The 'Internet address' section has a text box with 'http://'. At the bottom, there are buttons for 'Prepare website...', 'Apply', and 'Cancel'.

### 4.2. Changing websites

Both the Neosense CMS Business edition as the Neosense CMS Professional Edition offer the possibility for changing the properties of a website. Click on 'Change Website...!' for changing the properties of a website.

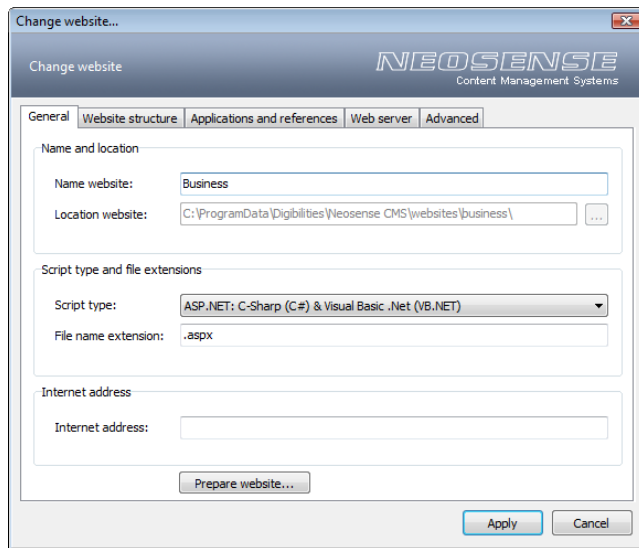


The screenshot shows the 'Change website...' dialog box with the 'General' tab selected. The 'Name and location' section has 'Business' in the 'Name website:' box and a file path 'C:\ProgramData\Digibilities\Neosense CMS\websites\business\' in the 'Location website:' box. The 'Script type and file extensions' section has 'ASP.NET: C-Sharp (C#) & Visual Basic .Net (VB.NET)' in the 'Script type:' dropdown and '.aspx' in the 'File name extension:' box. The 'Internet address' section has an empty text box. At the bottom, there are buttons for 'Prepare website...', 'Apply', and 'Cancel'.

### 4.3. Removing websites

The Neosense CMS Professional edition offers the possibility to remove a website. Click on 'Remove website' for removing an existing website.

## 5. Website properties window



### 'General' Tab

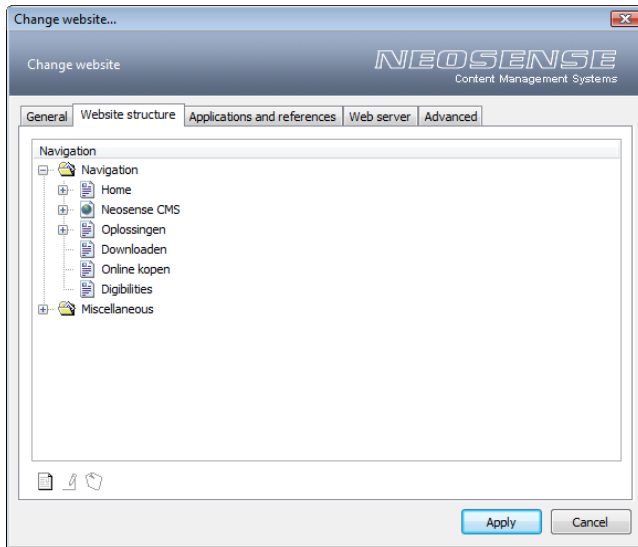
**Name website:** The name of the website is displayed on the opening screen. The name of the website is also used for the location where the website is stored.

**Location website:** This is the location where the website is stored. The default location for Windows XP & 2003 is `$.:\Documents and Settings\All Users\Application Data\Digibilities\Neosense CMS\` and for Windows Vista: `$.:\ProgramData\Digibilities\Neosense CMS\`

**Script type:** The script type stipulates the eventual programming language where the website is based on. Script type offers 'PHP: Hypertext Preprocessor' and 'ASP.NET: C-Sharp (C#) & Visual Basic. Exactly (VB.NET)'.

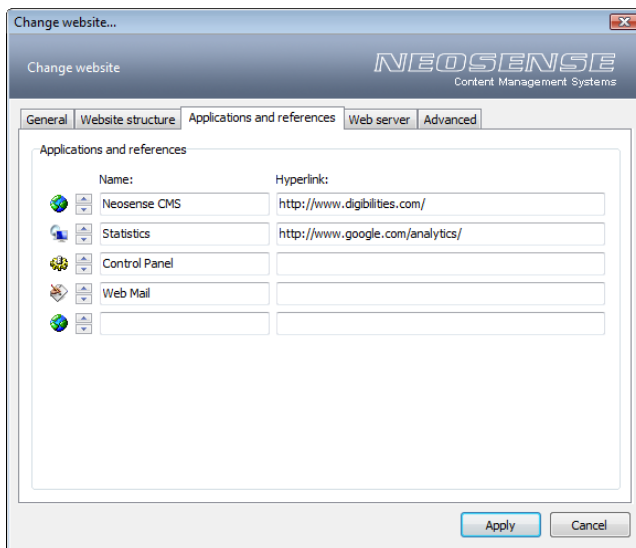
**File name extension:** The file extension depends on the script type. The default extension used for PHP is '.php' and '.aspx' for ASP.NET.

**Internet address:** By filling out the internet address of the website, the end user can visit the website via Neosense CMS.



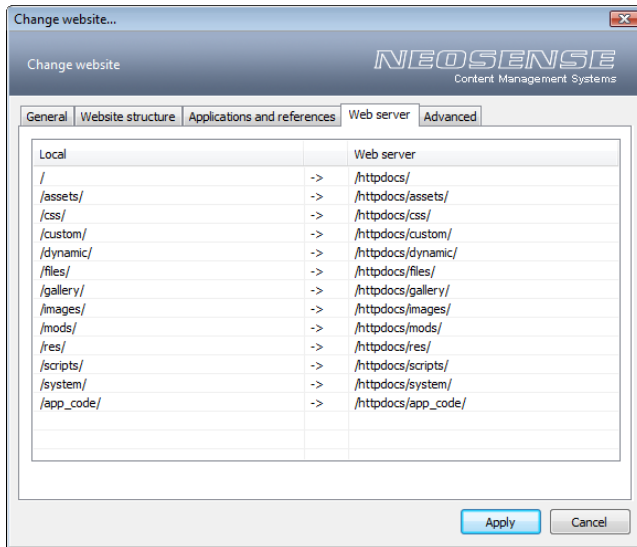
### 'Website structure' Tab

On this tab is an overview of the entire website structure. Below this overview are 'New page folder...', 'change page folder...' and 'Remove page folder' visible. The page folders are identified by the yellow icons and are located only on the first level. It is not possible to create, modify or remove the default pages from this overview.



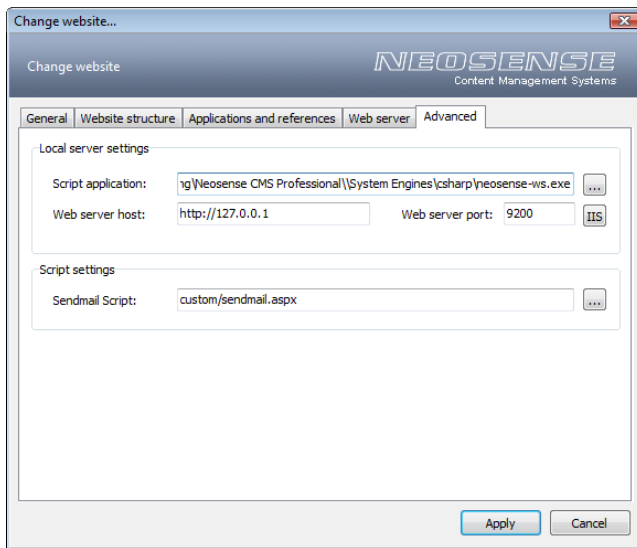
### 'Applications and references' Tab

On this tab you can make several hyperlinks to websites and web applications, for example statistics, webmail, personal web applications et cetera. If both the name and hyperlink are filled out, an additional button is displayed under the page manager in the user environment of Neosense CMS.



### 'Web server' Tab

On this tab you can modify the upload location of the folders. It is important that these settings correctly are entered.



### 'Advanced' Tab

**Script application:** Neosense CMS has its own local server. This server becomes active when an example of an (internet) page is requested (by means of External preview and Internal preview).

**Web server host:** The default setting for the web server host is 'http://127.0.0.1'.

**Web server port:** If you use other local servers with the same IP address and / or port number, you can modify the Neosense CMS server. The default setting for the web server port is 9200.

**Sendmail script:** This is the location where the script for sending forms are stored.

