



Neosense CMS 2009

Setup web server

Table of contents

1.	Setting up the web server	2
1.1.	Connecting to your web server	2
1.2.	Creating folders	3
2.	Setting up Neosense CMS	4
2.1.	Setting up the configuration environment	4
3.	Notes	6

1. Setting up the web server

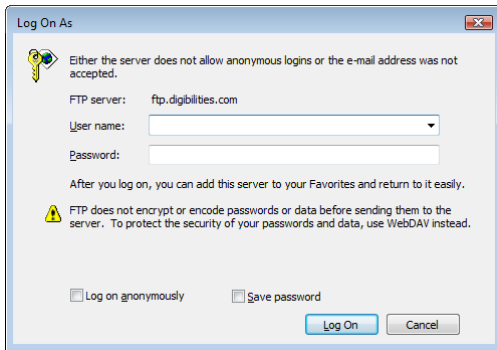
1.1. Connecting to your web server

Open the Windows Explorer to connect to your web server. Type the address of your host name in the address bar of the Windows Explorer. For example: 'ftp.yourdomain.com'.



Preview of the address bar in Windows Explorer

The Windows Explorer will request a user name and password. Enter the user name and password. If you do not have a host name, user name or password, please contact your hosting provider.

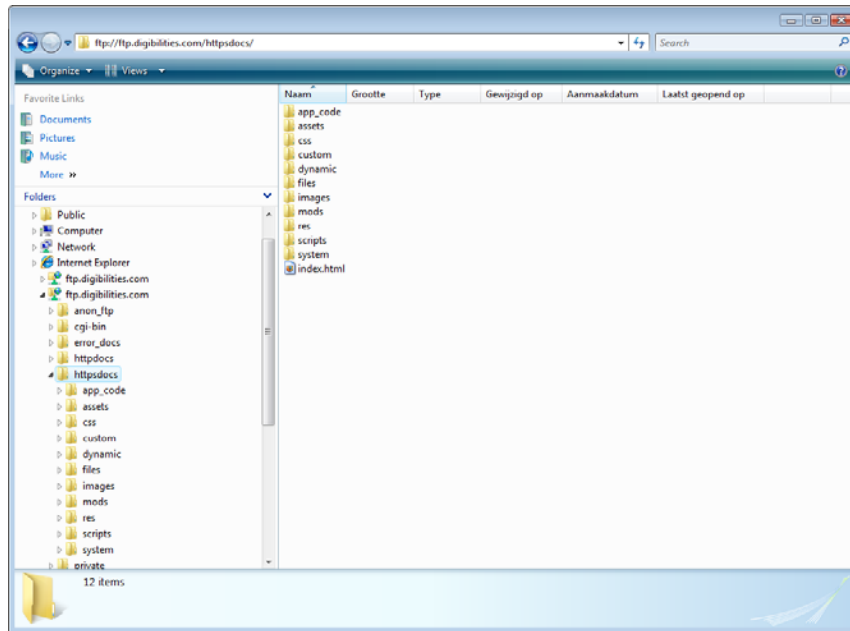


Preview of the login window from the Windows Explorer

	NOTE:	Setting up the web servers with other applications... For experienced users it is recommended to use a FTP client like FileZilla. FileZilla is distributed under the terms of the GNU General Public License and can be downloaded free of charge. (http://filezilla-project.org/download.php).
---	--------------	---

1.2. Creating folders

Create a folder where the website will be installed.



Preview of the Windows Explorer

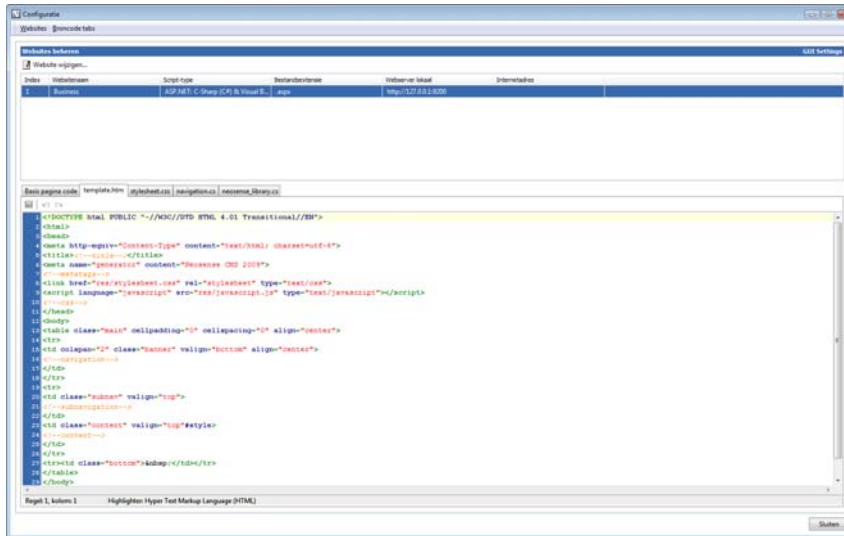
Create the following folder. Make sure the proper permissions are applied to these folders. Users must be granted to read files and folders.

- app_code
- assets
- css
- custom
- dynamic
- files
- gallery
- images
- mods
- res
- scripts
- system

2. Setting up Neosense CMS

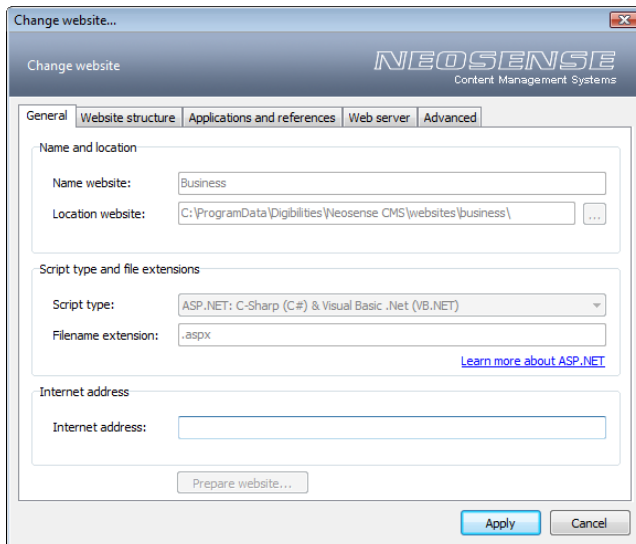
2.1. Setting up the configuration environment

The web server is ready for use now. Open Neosense CMS and click on the environment 'Configuration'.



Preview of the Neosense CMS configuration environment

Select the website for which you have prepared the web server and select 'Change website...!.



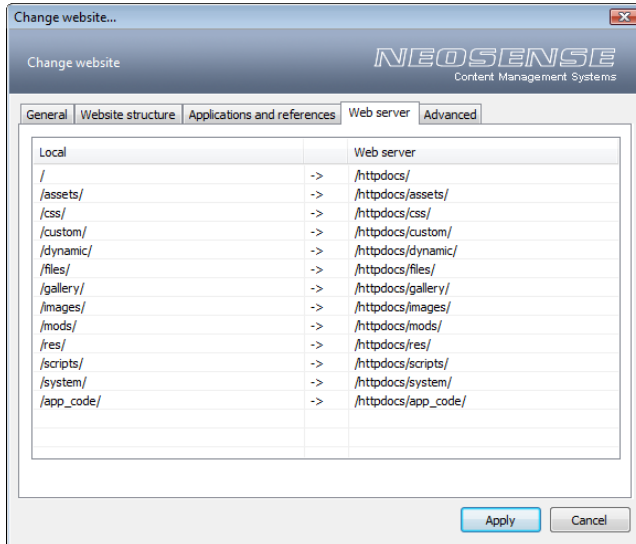
Preview of the window to change the website

Select the 'Web server' tab and double click the mouse on the upload locations of the folders which must be adjusted. The root of the upload location can be found in the address bar of the Windows Explorer.



Preview of the address bar of the Windows Explorer

The above screenshot shows that for each upload location must provide 'httpdocs'. The following screenshot shows the 'httpdocs' is added.



Preview of the tab 'Web server'

